

CM25 Vandalproof Pushbutton

19mm

Ø 22mm

32.1mm

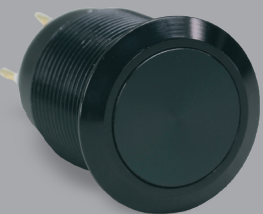
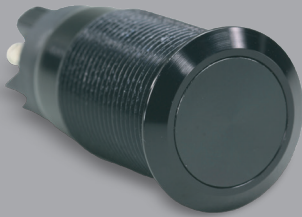
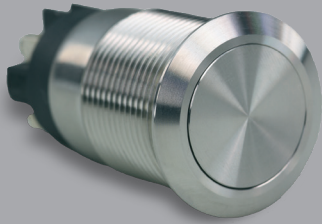
IP65

33.5mm

IP67

38.6mm

39.5mm

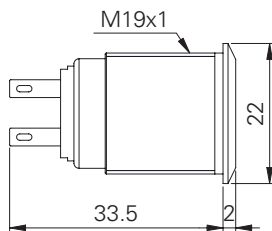


Specification

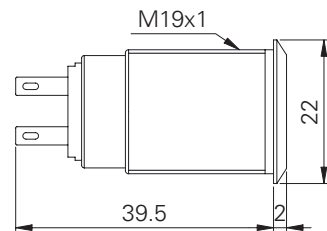
Termination	Screw or 2.8x0.5 fast connect terminals
Switching function	Momentary or maintained
Configuration of poles	Single
Maximum load	5A, 48VAC
Contact resistance	< 50 mΩ
Insulation resistance	> 1000 MΩ
Operating temperature	-20°C to +55°C
Ingress protection	IP67 (EN 60529) maintained: IP65
Duty cycle	50,000 (min)
Operating force	4N
Nut mounting torque	~ 0.8Nm
Panel thickness	1.0 to 10.0mm
Body & button material	See ordering information
Contact material	Silver Alloy

Product Dimensions

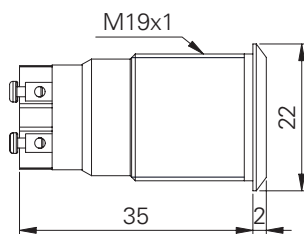
2.8mm terminals momentary



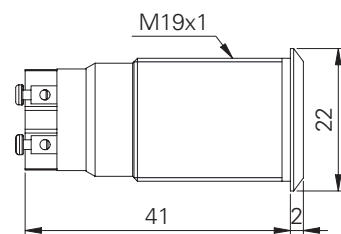
2.8mm terminals maintained



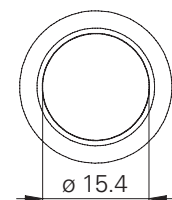
Screw terminals momentary



Screw terminals maintained



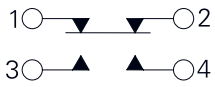
Front view



All dimensions in mm

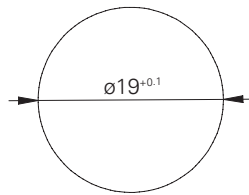
CM25 Vandalproof Pushbutton

Circuit Diagram

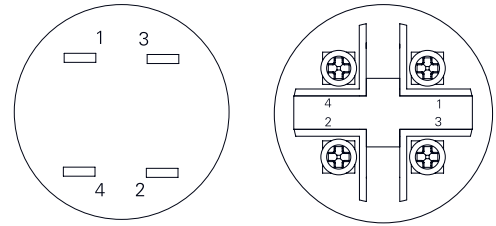


Form Z

Mounting Dimensions



Contact arrangement



All dimensions in mm

Ordering information

Material

V2: Stainless steel¹

AS: Aluminium black

Switch Function

M: Momentary

L: Maintained²

Termination

28: 2.8mm tabs

ST: Screws

CM25/[]/[F]/[]/[S]/[]

¹ 1.4301

² IP65 (EN60529)

Non rotating button available on request

Engelking Elektronik GmbH

Albstr. 16 · D-78609 Tuningen · Germany
Tel. +49 (0)7464-9865-0 · Fax +49 (0)7464-9865-71
info@engelking.de · www.engelking.de