

Features

- For LED Retail & Office Application
- Current Adjustable from 350-700mA by DALI UI
- Built-in PFC Function: up to PF 0.99
- Ultra-Slim Size: 21mm Height Design
- DALI Dimming Function
- High Efficiency
- Non Isolation Class I Design
- High Reliability & Long Life 50,000hrs
- Constant Current Design
- All-Round Protections: Short Circuit / Over Voltage / Over Temperature
- Meet DALI Standard: IEC62386-101, 102, 207
- Safety: Meet IEC61347-2-13 & EMI EN55015



(DALI Model only)

SPECIFICATION

Model Name		FSP70-ZZHS(070)D
Output	Rated Power	70W
	Output Voltage	50-100V
	Rated Current	700mA
	Current ADJ. Range	350-700mA By DALI UI
	Output Current Accuracy	±5%
	Line Regulation	±0.5%
Turn On Delay Time,Rise time		≤1s max ; ≤300ms max
Input	Input Voltage/ Frequency[3]	180~264Vac/ 47~63Hz
	Power Factor (typ.)	PF ≥0.97/230Vac at full load
	Efficiency (max.)	93%
	Total Harmonic Distortion[4]	THD <20%
	AC Current (typ.)	≤0.39A /200Vac ; ≤0.33A /240Vac
	Inrush Current (typ.)	15A at 230Vac, 25°C cold start
	Leakage Current	≤0.25mA/240Vac
Environment	Operating Temperature	-20°C ~ +50°C
	Operating Humidity	20~85% RH non-condensing
	Storage Temperature, Humidity	-35°C~+85°C, 10~95%RH
	Vibration	0.02g ² /Hz at 5 Hz sloping to 0.04g ² /Hz at 20 Hz, and maintaining 0.04g ² /Hz from 20 Hz to 500 Hz at a constant acceleration of 4.43G for 30 minutes per axis for all three axes
Protection	Over Voltage Protection	<450V Protection Type: Shut down and latch off, re-power on to recover
	Short Circuit Protection	Recovers automatically after fault condition is removed
Safety & EMC	Over Temperature Protection	Shut down and latch off, re-power on to recover
	Safety Standards	Design Refer to EN61347-1, EN61347-2-13
	EMC Standard	Compliant with EN55015/CISPR22 CLASS B, Compliant with EN61000-3-2 Class C , EN61000-3-3
	Surge Protection	Differential Mode: 1KV; Common Mode: 2KV
	Withstand Voltage (Hipot)	I/P-CASE 3000Vac, O/P-CASE 3000Vac
Others	Isolation Resistance	I/P-CASE ,O/P-CASE: 100M ohm @ 500Vdc/ 25°C
	Life Time[5]	50,000 hours at Tcase of ≤ 75°C
	MTBF	160,000 hours, MIL-HDBK-217F(25°C)
	Dimension (LxWxH)	300 x 30 x 21 mm
	Net Weight / Packing	220g; 20 pcs/ box

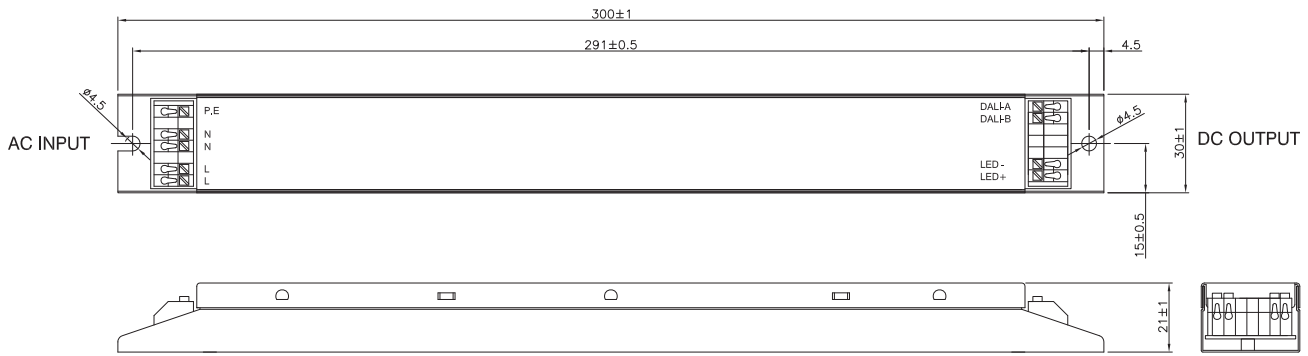
Notes:

1. All data NOT specially mentioned are measured at 230Vac/ 50Hz input, full load and 25°C of ambient temperature
2. The ripple current must be measured under the condition of AC coupling & 20MHz bandwidth. (Rated input and rated output)
3. Derating may be needed under low input voltages. Please check the static characteristics for more details.
4. Measured at rated output voltage.
5. Measured at 230Vac/50Hz input, 80% load.
6. The power supply is considered as a component that will be operated in combination with final equipment. Since EMC performance will be affected by the complete installation, the final equipment manufacturers must re-qualify EMC Directive on the complete installation again.

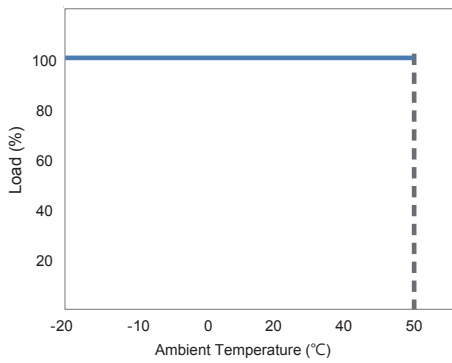


FSP TECHNOLOGY INC.

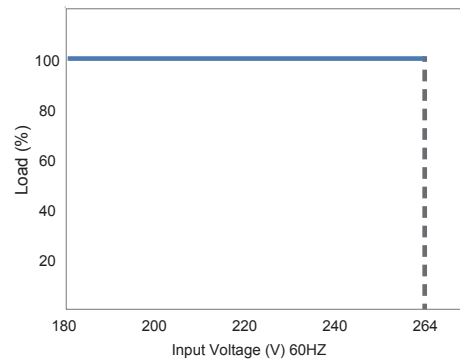
www.fsp-group.com / sales@fsp-group.com.tw
 NO.22, Jianguo E. Rd., Taoyuan City, Taiwan, R.O.C.
 TEL : +886-3-375-9888 / FAX : +886-3-375-6966



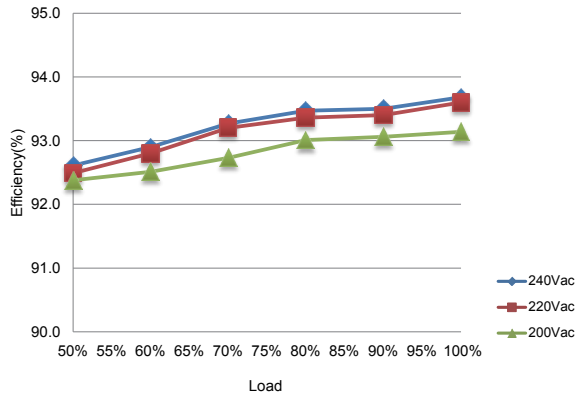
Derating Curve



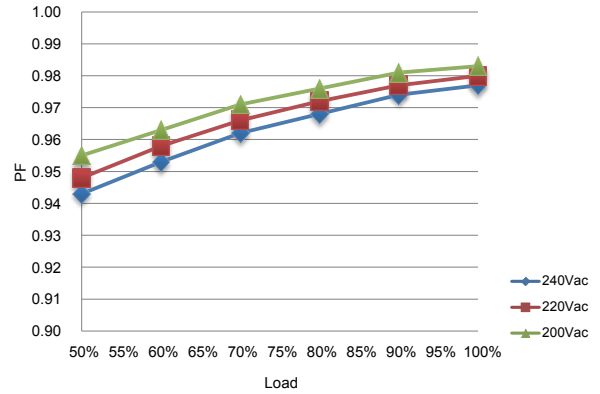
Static Curve



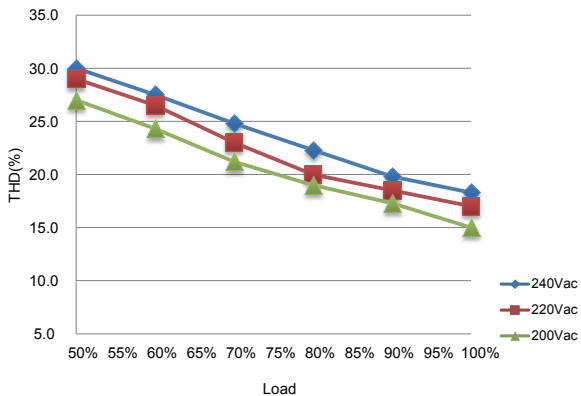
Efficiency vs Load



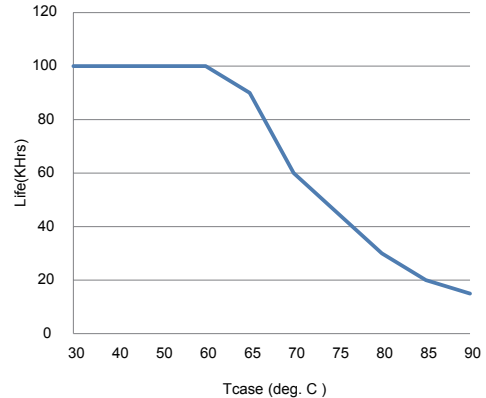
PF vs Load



THD vs Load



Life Time vs Tcase



FSP TECHNOLOGY INC.

www.fsp-group.com / sales@fsp-group.com.tw
 NO.22, Jianguo E. Rd., Taoyuan City, Taiwan, R.O.C.
 TEL : +886-3-375-9888 / FAX : +886-3-375-6966