

Features

- For LED Retail & Office Application
- Wide Input Range for Worldwide use (up to 277Vac)
- Built-in PFC Function: up to PF 0.99
- Ultra-Slim Size: 21mm Height Design
- DALI Dimming Function
- Comply with DALI standard (IEC62386-101,102,207)
- High Reliability & Long Life 50,000hrs
- Constant Current Design
- Isolation Class I Design
- All-Round Protections: Short Circuit/ Over Voltage/ Over Temperature
- Safety: Meet IEC61347-2-13, UL8750 & EMI EN55015



SPECIFICATION

Model Name		FSP40-ZZAS(070)D	FSP40-ZZAS(105)D
Output	Rated Power	40W	40W
	Output Voltage	30-60V	20-40V
	Rated Current	700mA	1050mA
	Current ADJ. Range	350-700mA	525-1050mA
	Output Current Accuracy	±5%	±5%
	Line Regulation	±0.5%	±0.5%
	Turn On Delay Time,Rise time	≤500ms max ;≤200ms max	
Input	Input Voltage/ Frequency[3]	120~277Vac/ 47~63Hz	
	Power Factor (typ.)	PF ≥0.98/120Vac, PF ≥0.92/230Vac, PF ≥0.9/277Vac at full load	
	Efficiency (max.)	88%	88%
	Total Harmonic Distortion[4]	THD <20% (Output Loading ≥50% at 120Vac/230Vac, Output Loading ≥75% at 277Vac)	
	AC Current (typ.)	≤0.5A /120Vac ; ≤0.4A /230Vac ; ≤0.3A /277Vac	
	Inrush Current (typ.)	10A at 230Vac, 25°C cold start	
	Leakage Current	≤0.25mA/240Vac	
Environment	Operating Temperature	-20°C ~ +50°C	
	Operating Humidity	20~85% RH non-condensing	
	Storage Temperature, Humidity	-40°C~+85°C, 10~95%RH	
	Vibration	0.02g ² /Hz at 5 Hz sloping to 0.04g ² /Hz at 20 Hz, and maintaining 0.04g ² /Hz from 20 Hz to 500 Hz at a constant acceleration of 4.43G for 30 minutes per axis for all three axes	
Protection	Over Voltage Protection	<100V	<80V
	Short Circuit Protection	Protection Type: Shut down and latch off, re-power on to recover Recovers automatically after fault condition is removed	
Safety & EMC	Over Temperature Protection	Shut down and latch off, re-power on to recover	
	Safety Standards	Design Refer to EN61347-1, EN61347-2-13, UL8750, CSA-C22.2 No. 250.13	
	EMC Standard	Compliant with EN55015/CISPR22 CLASS B, Compliant with EN61000-3-2 Class C (≥60% load), EN61000-3-3	
	Surge Protection	Differential Mode: 1KV; Common Mode: 2KV	
	Withstand Voltage (Hipot)	I/P-O/P 3000Vac	
Others	Isolation Resistance	I/P-O/P: 100M ohm @ 500Vdc/ 25°C	
	Life Time [5]	50,000 hours at Tcase of ≤ 75°C	
	MTBF	200,000 hours, MIL-HDBK-217F(25°C)	
	Dimension (LxWxH)	300 x 30 x 21 mm	
Net Weight / Packing	220g; 20 pcs/ box		

Notes:

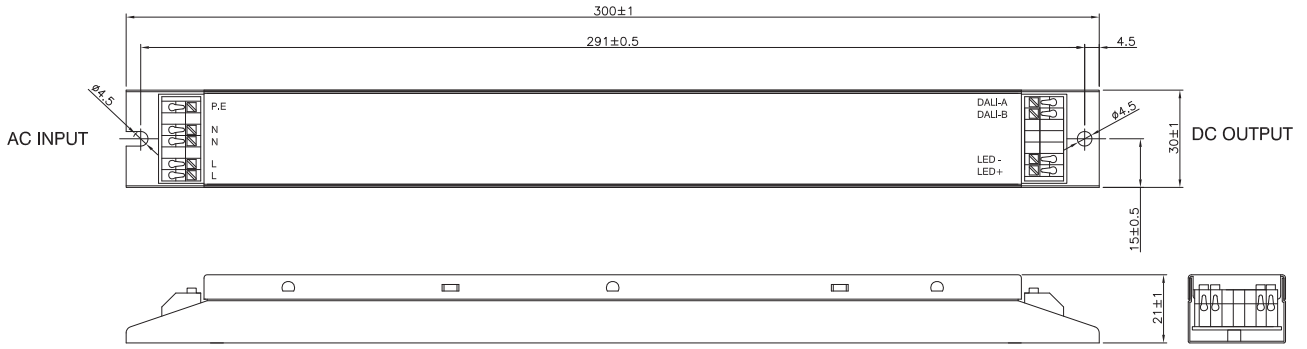
1. All data NOT specially mentioned are measured at 230Vac/ 50Hz input, full load and 25°C of ambient temperature.
2. The ripple current must be measured under the condition of AC coupling & 20MHz bandwidth. (Rated input and rated output)
3. Derating may be needed under low input voltages. Please check the static characteristics for more details.
4. Measured at rated output voltage.
5. Measured at 230Vac/50Hz input, 80% load.
6. The power supply is considered as a component that will be operated in combination with final equipment. Since EMC performance will be affected by the complete installation, the final equipment manufacturers must re-qualify EMC Directive on the complete installation again.



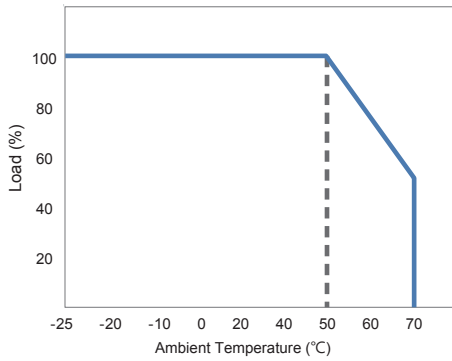
FSP TECHNOLOGY INC.

www.fsp-group.com / sales@fsp-group.com.tw
 NO.22, Jianguo E. Rd., Taoyuan City, Taiwan, R.O.C.
 TEL : +886-3-375-9888 / FAX : +886-3-375-6966

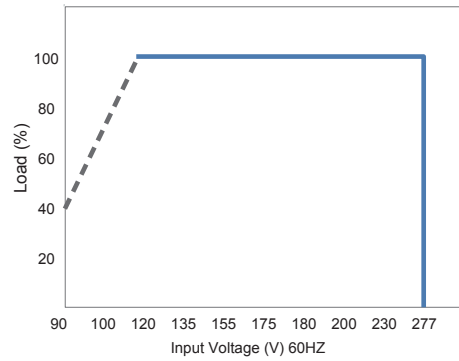
Unit: mm



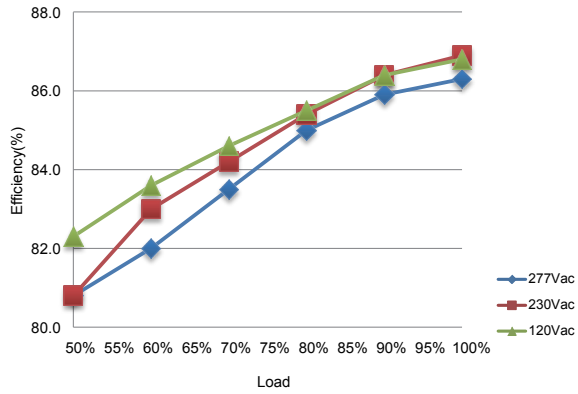
Derating Curve



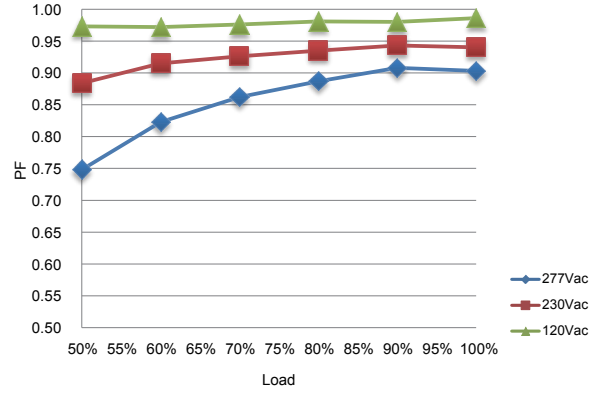
Static Curve



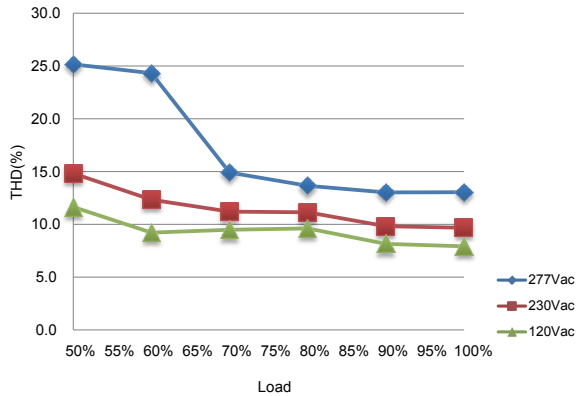
Efficiency vs Load



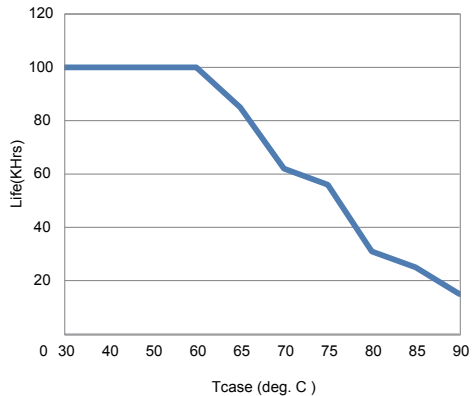
PF vs Load



THD vs Load



Life Time vs Tcase



FSP TECHNOLOGY INC.

www.fsp-group.com / sales@fsp-group.com.tw
 NO.22, Jianguo E. Rd., Taoyuan City, Taiwan, R.O.C.
 TEL : +886-3-375-9888 / FAX : +886-3-375-6966